



AMERICAN ACADEMY
of OPTOMETRY



American Optometric
Association



***Joint
Board Certification
Project Team***



Association of Regulatory Boards of Optometry, Inc.



Association of Schools and Colleges of Optometry



NATIONAL BOARD
OF EXAMINERS IN OPTOMETRY



Board Certification in Optometry: *Framework*

*Initial Report of the
Joint Board Certification
Project Team*

January 27, 2009





JBCPT Mission Statement

“Develop and propose an attainable, credible and defensible model for Board Certification in Optometry and maintenance of certification for adoption by the profession. This model will establish standards for voluntary board certification and maintenance of certification in the practice of optometry. This model will communicate information about these standards to support the public’s quest for high quality health care.”

–Adopted by JBCPT, November 2007





Board Certification in Optometry

Definition: A voluntary process that establishes standards that denotes that a doctor of optometry has exceeded the requirement(s) necessary for licensure. It provides the assurance that a doctor of optometry maintains the appropriate knowledge skills and experience needed to deliver quality patient care in optometry.





Board Certification in Optometry

- What will the new board be called?

American Board of Optometry

- Who controls it?

It will be an **independent** not-for-profit corporation.

- What is the composition of the board?

Initially: One member appointed by each participating JBCPT organization and one additional member appointed by the AOA.



Draft Process

- Based generally on American Board of Family Medicine
- Different requirements for those recently completing a Residency, attaining Fellowship in the American Academy of Optometry, and other practitioners
- Credible, Attainable, Defensible





Board Certification Examination

Every candidate will take an enhanced Patient Assessment and Management-like (PAM-like) examination(s) with areas of emphasis.

A PAM examination consists of simulated patient cases. Each case begins with a scenario in which the patient history and clinical data are presented. These data usually include at least one visual.





Board Certification Examination

Possible Examination Topics:

- Refractive Status / Sensory Processes / Oculomotor Processes
 - Ametropia
 - Ophthalmic Lenses
 - Contact Lenses
 - Low Vision
 - Binocular Vision / Perceptual Anomalies





Board Certification Examination

Possible Examination Topics:

- Disease / Trauma
 - Lids/lashes/lacrimal system/ocular adnexa/orbit
 - Conjunctiva/cornea/refractive surgery
 - Lens/cataract/IOL/pre- and post-operative care
 - Episclera/sclera/uvea
 - Vitreous/retina
 - Optic nerve/neuro-ophthalmic pathways
 - Glaucoma
 - Emergencies
 - Systemic health





Board Certification Examination

Each candidate will choose three topics to weight/tailor the examination toward his or her areas of interest.



General Eligibility Requirements Prior to Examination

- **Graduate** of School or College of Optometry accredited by the Accreditation Council on Optometric Education (ACOE).
- Possession of an **active license** to practice **therapeutic** optometry in a State, District of Columbia, U.S. Commonwealth or Territory.
- **Clearance** of Search of National Practitioner Data Bank (NPDB) & Health Integrity and Protection Data Bank (HIPDB)
- Statement of adherence to American Board of Optometry **Code of Ethics**

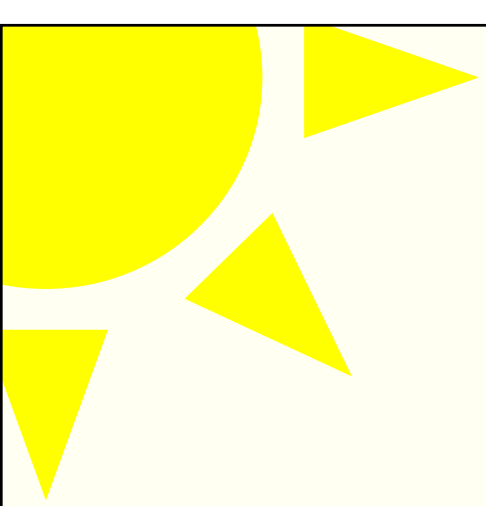




General Eligibility Requirements Prior to Examination

- Proof of three years active licensure
- Exceptions:
 - Residency: The 3 year active requirement is waived after completion of the residency
 - Certificate of Fellowship (Clinical) in the AAO reduces active licensure requirement to one year



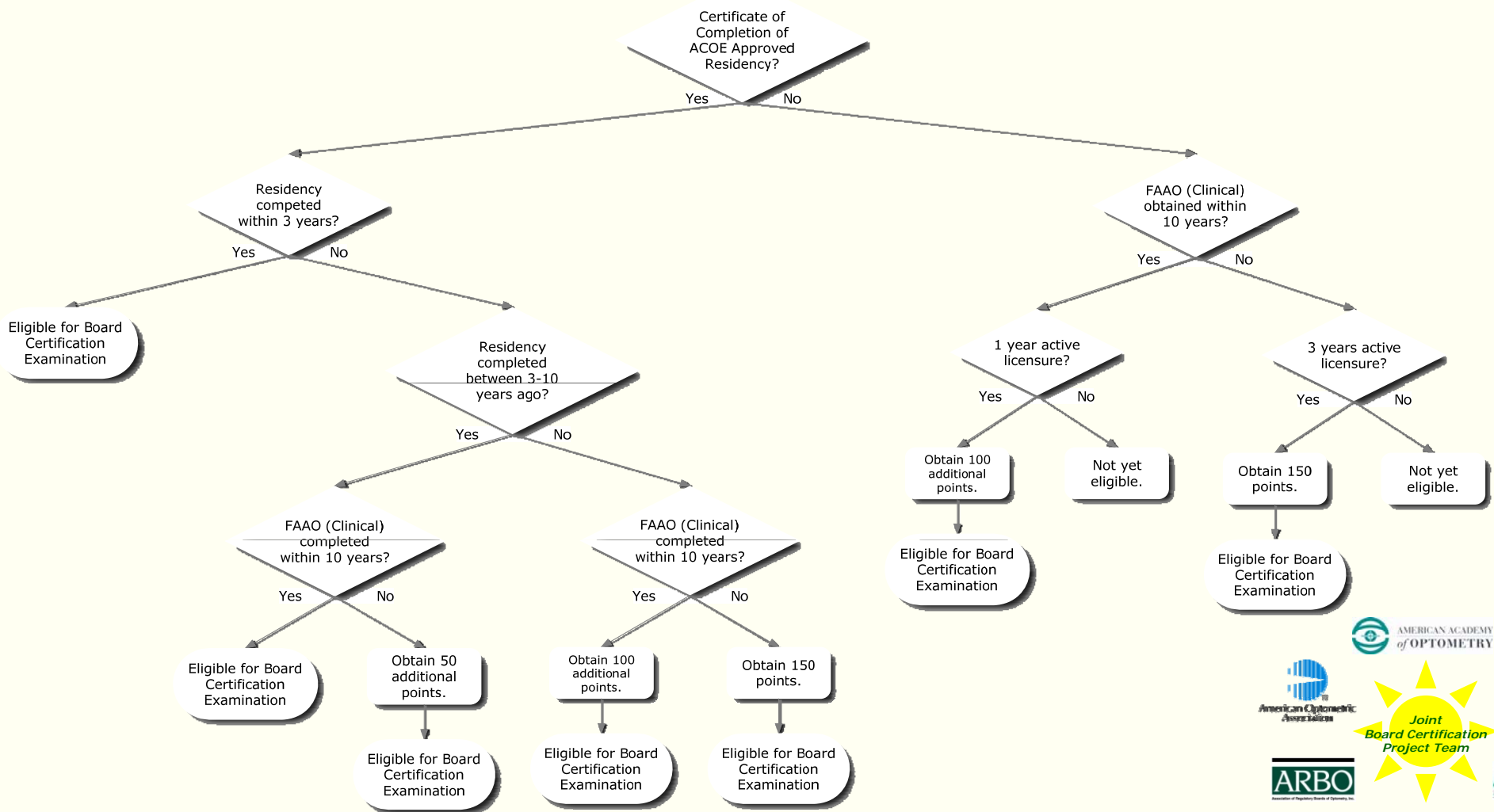


General Eligibility Requirements Prior to Examination:

- Graduate of School or College of Optometry accredited by the Accreditation Council on Optometric Education (ACOE).
- Possession of an active license to practice therapeutic optometry in a State, District of Columbia, U.S. Commonwealth or Territory.
- Clearance of Search of National Practitioner Data Bank (NPDB) & Health Integrity and Protection Data Bank (HIPDB).
- Statement of adherence to American Board of Optometry Code of Ethics.
- Proof of three years active licensure immediately prior to application. (*Exceptions below)

Post Graduate Educational Requirements:

The minimum of 150 points can be attained by the following experiences. Some of these categories may have minimum or maximum points permitted.





Post-Graduate Educational Requirements

- A minimum of 150 points after initial licensure establishes eligibility for the examination.
 - These must be attained within the **three years** immediately prior to the examination and can be attained by the following experiences. Note that these categories may have minimum or maximum points permitted.





Post-Graduate Educational Requirements

1. Residency:

- Worth 150 points if within three years of completion, or
- Worth 100 points if between 3-10 years of completion.
- * In addition, the three-year active licensure general requirement is waived.

2. Fellowship in the American Academy of Optometry (Clinical)

- Worth 50 points toward the requirement if within 10 years of completion of Fellowship.
- * In addition, the three-year active licensure general requirement is reduced to 1 year.

3. Other Educational Activities





Post-Graduate Educational Requirements

Category I

A Minimum of 50% of Points must be Category I.

- A. Continuing Education conferences, meetings or workshops carrying ABO-authorized credit (such as State, District of Columbia, U.S. Commonwealth or Territory **board approved** or **COPE-approved** credit). (Continuing Education with Examination, CEE, is acceptable but not required.)





Post-Graduate Educational Requirements

Category II

A Maximum of 50% of Points can be Category II. A Maximum of 20% of the total points can be from any lettered sub-category.

- A. **Educational activities** (such as papers and poster presentations, scientific sessions and grand rounds) provided by schools and colleges of optometry accredited by the Accreditation Council on Optometric Education (ACOE), and medical schools approved by the Liaison Committee on Medical Education (LCME).





Post-Graduate Educational Requirements

Category II (Continued)

- B. **Distance learning courses**, both interactive and non-interactive, with examinations that qualify for ABO-authorized credit (such as State, District of Columbia, U.S. Commonwealth or Territory board approved or COPE-approved credit) upon completion. (Examples include electronic media, audio/video tapes, and journals.)
- C. **Educational** or scientific portions of hospital meetings, local optometric or medical society meetings, or grand rounds not approved by COPE or the state board.



Post-Graduate Educational Requirements

Category II (Continued)

- D. Other ABO-authorized **performance in practice** activities (other than SAMs or PPMs), such as web-based quality improvement modules, record review, peer evaluation, documented point of care learning, etc.
- E. An educational program of a university or college having a defined curriculum, designated faculty, and accreditation from a recognized institutional accrediting organization or an agency recognized by the U.S. Department of Education, that is designed to enhance a participant's instructional, research, administrative, or clinical knowledge and skills necessary for the participant to succeed as an educator, administrator, or practitioner in optometry.



Post-Graduate Educational Requirements

Category II (Continued)

F. Scholarly Activities

- Members of teams who develop assessment tools, including Self-Assessment Module (SAM) and Performance In Practice Module (PPM) Knowledge Development for initial and maintenance of certification for optometrists, item developers for the National Board of Examiners in Optometry (NBEO), members of graduate thesis committees or AAO oral examination committees.



Post-Graduate Educational Requirements

Category II (Continued)

F. Scholarly Activities (Continued)

- Teaching healthcare students or healthcare professionals.
- Review of manuscripts for publication in a peer-reviewed optometry, medical or scientific journal.
- Publication of a clinical, review or research article in a peer reviewed optometry, medical or scientific journal.





Post-Graduate Educational Requirements

Category III (Under Development)

- A. Completion of Self-Assessment Modules (SAMs) and Performance In Practice Modules (PPMs) designed to enhance knowledge and skills significant to the practice of optometry.



Post-Graduate Educational Requirements

Category III (Under Development)

A. Self-Assessment Modules (SAMs).

- Provide in-depth assessment of current knowledge in specific content areas
- Consists of 2 parts: a 60 item knowledge assessment, with direct links to supporting references and critiques, and a clinical simulation that focuses on patient management
- Completed over the Internet, usually in 1-4 hours



Post-Graduate Educational Requirements

Category III (Under Development)

B. Performance In Practice Modules (PPMs)

- Comprised of a quality improvement activity which takes place over a 3- to 6-month period
 1. Complete Practice assessment questionnaire
 2. Select 10 patient records based on specific diagnostic codes
 3. Enter data on various clinical measures
 4. Immediate feedback on how responses compare with peers
 5. Program will suggest interventions to affect clinical outcomes





Post-Graduate Educational Requirements

*All points are subject to final approval by
the American Board of Optometry.*





Maintenance of Certification

- Professional Standing
 - Current, valid, unrestricted, therapeutic license
- Lifelong Learning and Self-Assessment
 - Education (CE) and self-assessment (SAM)
- Practice Performance Assessment (PPMs)
 - Demonstrate ability to assess the quality of care provided compared to peers and national benchmarks and apply best evidence or consensus recommendations to improve care using follow-up assessments.
- Cognitive Expertise
 - Demonstrate through examination fundamental practice-related and practice environment-related knowledge to provide quality of care



Maintenance of Certification Process

Every 10 Years in Three 3-Year Stages

STAGE I

- Three SAMs (Self-Assessment Module)
 - SAM = 15 points
 - Once started, must be completed in one year
 - Maximum 3 SAMs per stage
- OR 2 SAMs and 1 PPM (Performance In Practice Module)
 - PPM = 50 points
- 150 Total Points
 - Category I: Minimum of 50% of Points
 - Category II: Maximum of 50% of Points



Maintenance of Certification Process

Every 10 Years in Three 3-Year Stages

STAGE II

- 150 Total Points needed
2 SAMs and 1 PPM required = 80 points

STAGE III

- 150 Total Points
2 SAMs and 1 PPM required = 80 points



Maintenance of Certification Process

May apply for recertification examination in either the 9th or 10th year of the certification cycle.

All Stage III requirements must be completed to be eligible for the examination.





“Given your limited number of accredited training programs, I think that the options that you have created for acceptable pathways to certification are very reasonable. Congratulations on the development of an excellent document.”

James C. Puffer, M.D.

President and Chief Executive Officer
American Board of Family Medicine





Deliberation on the JBCPT's
model for board certification in
optometry:

**AOA House of Delegates
Optometry's Meeting®
June 24-28, 2009
Washington, DC**





AMERICAN ACADEMY
of OPTOMETRY



American Optometric
Association



***Joint
Board Certification
Project Team***



Association of Regulatory Boards of Optometry, Inc.



Association of Schools and Colleges of Optometry



NATIONAL BOARD
OF EXAMINERS IN OPTOMETRY